



FOURTH QUIZ ANSWERS

COSC 6360

November 2020



F2FS

- Apart from its location, what distinguishes the F2FS node address table (NAT) from Sprite LFS i-node map?



F2FS

- Apart from its location, what distinguishes the F2FS node address table (NAT) from Sprite LFS i-node map?
 - ***Unlike the Sprite LFS i-node map, the F2FS node address table (NAT) contains the addresses of all indirect addressing blocks. F2FS calls them "nodes."***



F2FS

- What is the main motivation for F2FS ***threaded logging***?



F2FS

- What is the main motivation for F2FS *threaded logging*?
 - *It allows F2FS to keep working when there are no clean segments available.*



NFS

- What is the purpose of NFS *file generation numbers*? (10 points)

- Where are these numbers stored? (10 points)



NFS

- What is the purpose of NFS *file generation numbers*? (10 points)
 - *File generation numbers are used to detect stale file handles.*
- Where are these numbers stored? (10 points)
 - *In the i-node of every file.*

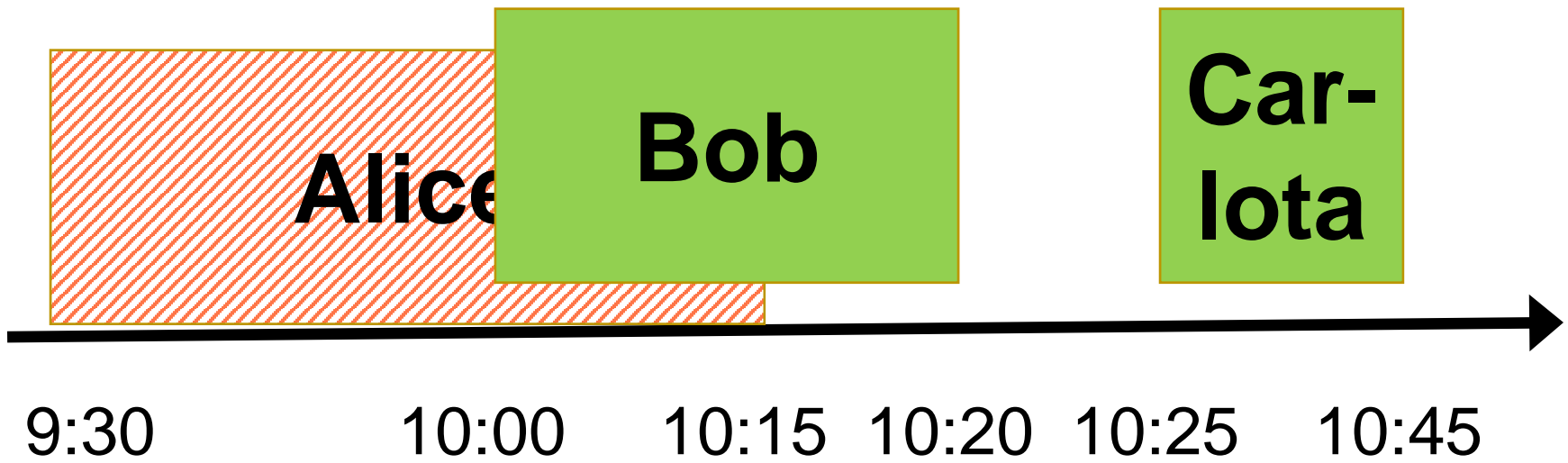


NFS Evolution

- Consider a distributed file system implementing close-to-open consistency. Assuming that
 - Alice opens the file at 9:30 AM, modifies it, and closes it at 10:15 AM,
 - Bob opens the file at 10:00 AM, modifies it, and closes it at 10:20 AM,
 - Carol opens the file at 10:25 AM, modifies it, and closes it at 10:45 AM,
- Which of these three users would see his or her changes actually incorporated in the final version of the file?



NFS





NFS Evolution

- Consider a distributed file system implementing close-to-open consistency. Assuming that
 - Alice opens the file at 9:30 AM, modifies it, and closes it at 10:15 AM,
 - Bob opens the file at 10:00 AM, modifies it, and closes it at 10:20 AM,
 - Carol opens the file at 10:25 AM, modifies it, and closes it at 10:45 AM,
- Which of these three users would see his or her changes actually incorporated in the final version of the file?

Bob and Carlota



Leases

- Which of the three CAP properties is not satisfied by time-limited leases?
 - Consistency
 - Availability
 - Partition tolerance



Leases

- Which of the three CAP properties is not satisfied by time-limited leases?
 - Consistency
 - **Availability**
 - Partition tolerance



Google file system

- In the Google File System, which metadata are *not* kept persistent by the master server?



Google File System

- In the Google File System, which metadata are **not** kept persistent by the master server?
 - ***The locations of the chunk replicas.***



Google File System

- How does the Google File System protect the contents of its data chunks against device failures?



Google file system

- How does the Google File System protect the contents of its data chunks against device failures?
 - ***All chunks are replicated at least three times***



Ceph

- How does Ceph map objects into placement groups?



Ceph

- How does Ceph map objects into placement groups?
 - *Through hashing.*



Ceph

- What does Ceph do to speed up access to directories that are heavily written to?
 - *It hashes their contents over the cluster.*